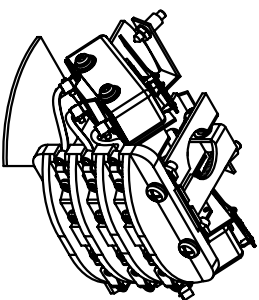
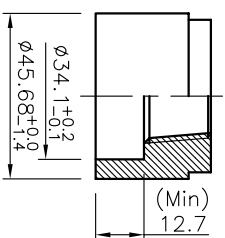


WIRING DIAGRAM



8 SNAP SWITCH



PROCESS CONNECTION

TOTAL Q'TY : - SETS

NO.	TAG NO.	FLUID(UPPER/LOWER)	OPER. PRESS. MAX.(Bar)	OPER. TEMP. MAX.(C)	RATING	SET POINT	C TO C (MEASURING RANGE)	CONNECTION 1"SW 3000# (SIDE-BOTTOM)	Q'TY
1	-	-	-	-	150#	150	-	-	SETS

OR	OPENS ON RISING LEVEL
CR	CLOSES ON RISING LEVEL
OF	OPENS ON FALLING LEVEL
CF	CLOSES ON FALLING LEVEL
V	SWITCH ACTION

△									
△									
△									
△									
△									
REV	DESCRIPTION	DATE	DESIGNED	REVIEWED	APPROVED				

DESIGN DATA

CODE	KEPIC MGE & ASME B31.1		
	UNIT	mm	
ENCLOSURE		WEATHER PROOF	
ORDERING CODE	PROCESS TEMP(CONTACT RATING)		SNAP SWITCH MAT'L
1	Max.120°C (10A 120V AC / 0.6A 125V DC)		PC, PHENOL,304SS
2	Max.230°C (5A 250V AC / 0.5A 125V DC)		PC, CERAMIC,304SS
3	Max.400°C (1A 250V AC / 1A 30V DC)		PC, CERAMIC,304SS
4	Max.230°C (15A 250V AC / 1A 30V DC)		PC, CERAMIC,304SS
5	Max.400°C (1A 115V AC / 3A 28V DC)		PC, CERAMIC,304SS
HERMETICAL SEAL TYPE			

NOTES

- REFER TO INSTALLATION MANUAL WHEN YOU SET IT UP
- CABLE SIZE : 14 AWG.
- DEAD BAND IS 15mm. FIXEDLY ABOVE THE HEAD FOR INSTALLATION / REMOVAL AND MAINTENANCE
- CABLE CONNECTION IN TERMINAL PART VIA CLAMPED RING TYPE
- PAINTING SPEC : SEOJIN STD.
- TEST FOR WELDING : HYDRO TEST
- CHAMBER ORDERING INFORMATION, SMC-73CH-B-1-A-1-A-1-E-1-A

BILL OF MATERIAL

NO	DESCRIPTION	MATERIAL	QTY	SPECIFICATION
11	GASKET	316SS	1	
10	NUTS	A194 GR 2H	-	
9	BOLTS	A193 B7	-	
8	SNAP SWITCH			
7	PROCESS CONNECTION	A105	2	1"SW 3000#
6	CHAMBER ASS'Y	A105g	1	4" Sch.40
5	CHAMBER FLANGE	A105	1	4" RF
4	FLOAT	316LSS	1	φ90
3	SENSOR FLANGE	A105	1	4" RF
2	BASE	AC2B	1	
1	COVER	C.S	1	

CUSTOMER	-
PROJECT	-

TITLE	VERTICAL FLOAT TYPE LEVEL SWITCH SMC-73F-1-A-1-A-1-A-1 ASSEMBLY DRAWING
-------	---

MANUFACTURER

**Seojin Instech Co., Ltd.**

SCALE

N/S

DATE

SJ-MO15-DWG-AP411-A

REV

1